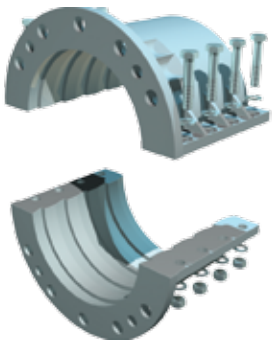


## LINATEX® Split Cast Coupling System (801)



The Linatex® Split Cast Coupling System (801) is designed to accommodate the smooth Linatex® Cut End Hose (801) range. The two-piece coupling system allows the hose to be engineered to a specific length, cut and coupled onsite, and installed within minutes.

The Linatex® couplings are provided in two halves. When the hose is cut to its required length, the external two piece couplings bolt over the outside of the hose to form a flanged face. As the coupling system does not come into contact with the process flow, the coupling can be re-used.

The Linatex® couplings are designed to accommodate an array of flange drill patterns and are specifically designed to accommodate the Linatex® Cut End Hose (801) range.

### Features

- The unique feature of the Linatex® Split Cast Coupling System (801) is its ability to accommodate a broad array of drill patterns, eliminating the need to stock several couplings.
- Suits an OD critical hose.
- Linatex® couplings are die cast and robust.
- Couplings are embossed with safe working pressure.
- Linatex® aluminum couplings are supplied pre-assembled with bolts and designed to adapt to Linatex® Premium Rubber lined hose, or standard SBR lined hose.
- Coupling flange is slotted (refer to table over page).
- Gaskets available upon request.

### Applications

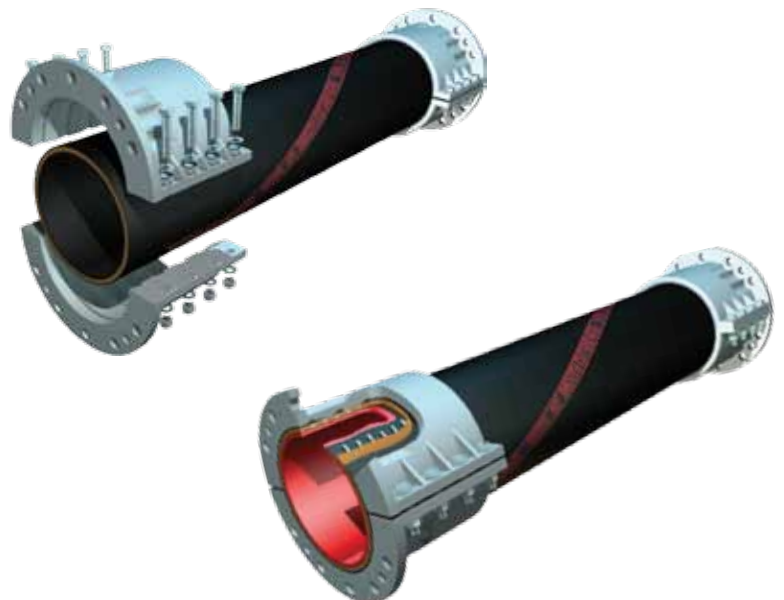
These lightweight, versatile couplings are the coupling of choice for many industries because when coupled with the Linatex® Cut End Hose (801) they provide a lightweight, easy to fit and readily available alternative.



### For More Information

Please contact your local Weir Minerals representative or visit our website.

[www.weirminerals.com](http://www.weirminerals.com)





### Specifications

NOMINAL SIZE		MAX WP		BEAD THICKNESS		WEIGHT		LENGTH	
mm	in	kPa	psi	mm	in	kg/ea	lbs/ea	mm	in
50	2	1035	150	14	0.5	3	7	90	3.5
76	3	1035	150	17	0.7	4	9	92	3.5
100	4	1035	150	18	0.7	5	11	145	5.7
127	5	1035	150	18	0.7	7	15	157	6.2
150	6	1035	150	20	0.8	8	18	167	6.6
200	8	1035	150	20	0.8	12	26	232	9.1
254	10	1035	150	20	0.8	25	55	270	10.6
300	12	1035	150	21	0.9	31	68	330	13
350	14	690	100	35	1.4	43	95	350	13.8
400	16	690	100	35	1.4	52	114	330	13

Please contact your Weir Minerals representatives for more information on larger coupling sizes.

### Accommodated Drill Patterns

NOMINAL SIZE		ANSI 150	BS4504 PN6	BS4504 PN10	BS4504 PN16	DIN Std	AS2129 Table D	AS2129 Table E	SABS 1000/3	GB
mm	in									
50	2	✓	-	✓	✓	✓	✓	✓	✓	✓
76	3	✓	✓	✓	✓	✓	✓	✓	✓	✓
100	4	✓	-	✓	✓	✓	✓	✓	✓	✓
127	5	✓	-	✓	✓	✓	✓	✓	✓	✓
150	6	✓	-	✓	✓	✓	✓	✓	✓	✓
200	8	✓	-	✓	✓	✓	✓	✓	✓	✓
254	10	✓	-	✓	-	✓	✓	✓	✓	✓
300	12	✓	-	✓	✓	✓	✓	✓	✓	✓
350	14	✓	-	✓	-	-	✓	✓	-	-
400	16	✓	-	✓	-	-	✓	✓	-	-

### LINATEX® Rubber Products

2701 S Stoughton Road  
Madison WI 53716  
North America

Tel: +1 608 221 2261  
Fax: +1 608 661 8734  
www.weirminerals.com

Excellent  
Minerals  
Solutions

