

Providing high quality products and service to a variety of industries

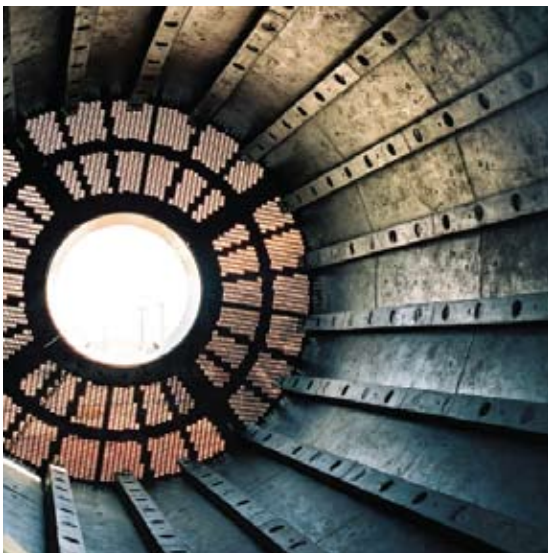
Commitment to excellence and service

Weir Minerals North America–Rubber Engineering (WMNA-RE) has manufactured rubber products for industry for over 50 years. Our focus on quality, service and ability to provide solutions to our customer’s challenging problems has enabled us to become one of North America’s leading custom rubber manufacturers.

This success formula has led to the development of a wide variety of rubber materials for use in industrial applications. We provide customer solutions for mining, power generation, oil production and processing, municipal water treatment and many more.

Our experience in industry’s most challenging projects ensures we can handle your order quickly, efficiently, with the quality required and at a price to keep you on budget.

VULCO® Wear Resistant Linings



Above: Interior of a scrubber using Vulco® lining. Scrubbers are used in the sand and gravel and diamond mining industries

Center: Beet kickers used in sugar beet harvesting



Above: Extractor belt for the process industry

Solutions for industrial applications

Our products are used in a wide range of applications including

- Mining and minerals processing: *gold, copper, iron ore, phosphate, zinc, lead*
- Sand & gravel
- FGD
- Agriculture
- Industrial
- Oilfield
- Construction

A large range of rubber materials insures we have the solution for your application.

Years of rubber technological developments have led to a wide variety of products for abrasive and corrosive applications

Our advanced rubber products are divided into four material categories: wear rubber products, custom molded products, lined rubber products/handlay and urethane molded products.

The strength of WMNA-RE's products lies in the superiority of our designs, wear and corrosion resistant materials. Our products have a deserved reputation for extended wear life and reliability, bringing the customer the lowest cost of ownership.



Above: Custom molded products

Below: Vulco® impact assembly with UHMW covered impact bars in 48" to 60" lengths

Wear Rubber

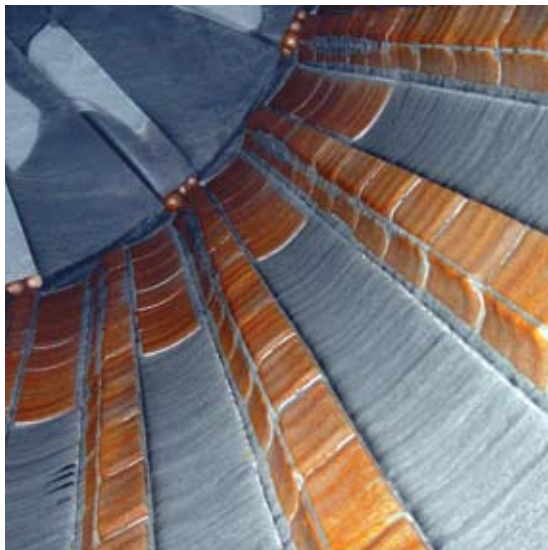
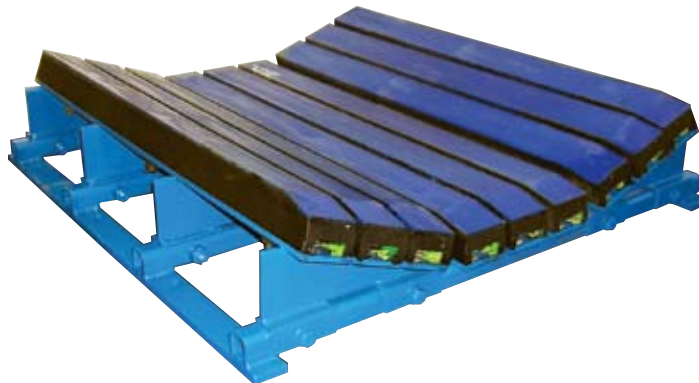
- Ceramic wear pads
- Trommel screens
- Feed cones
- Chute linings
- Trunnion liners
- Metal backed sheeting
- Belt scrapers
- Debarking staves
- Impact bars and assemblies
- Screen panels
- Flat rubber sheeting
- Quarry truck bed liners
- Seismic isolation pads

Custom Molded

- Wheels
- Rollers
- Tubes
- Press pads
- Screens (molded cloth)
- Specialty belting
- Cement plugs
- Rubber darts and dart seats
- Marine products
- Oil field tool products
- Agricultural components



Above: Vulco® double trommel screen used in aggregate and mining industries



Bottom left: Vulco® rubber mill lining with metal capped lifter bars and shell plates

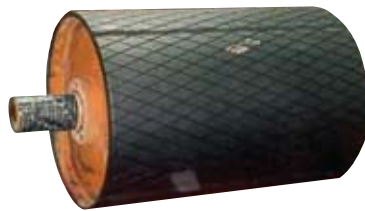
Bottom center: Vulco® rubber trommel screen for grinding mill

Bottom right: Vulco® seismic isolation pad used in construction to protect against earthquakes



**Lined Rubber/
Handlay**

- Tanks
- Pipes
- Fittings
- Flotation equipment
- Valves and valve fittings
- Pump casings
- Crusher equipment
- Rubber covered rolls
- Pulley laggings
- Filter drums



Urethane

- Wheels
- Rollers
- Roller sleeves
- Screen panels
- Chutes
- Slings
- Classifiers
- Scrappers
- Fan blades
- Darts and dart seats
- Paddles and bushings
- Bull wheels
- Sheave liners

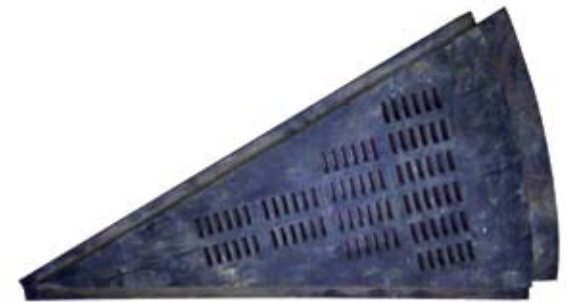
Custom Rubber

- Custom products to your specifications in rubber or urethane
- Calendered stock
- Raw stock
- Slabs

Our years of experience, quality products, and high level of service are ready when you need them

WMNA-RE is in the forefront of the industry in developing quality products required for global supply. This enables us to provide major minerals producers worldwide with consistent products and standards of service exactly when needed.

We supply our customers with rapid response and on-site support from experts who understands local conditions. Weir Minerals North America's geographical footprint plays a major role in establishing our closeness with our customers operations.



Above: Vulco® rubber grate plate for mill lining

Above top: Vulco® pulp discharger segments for 32' mill

Above center: Warman® custom cast urethane products

Above bottom: Vulco® rubber pulley lagging



Bottom left: Interior of a Vulco® rubber lined ball mill

Bottom center: Vulco® rubber screen on screen deck

Bottom right: Vulco® rubber lined haul truck



Professional engineering, design expertise and manufacturing excellence are all available in our modern facility.

Right: 84" and 96" presses are among the biggest in the western region of the United States

Below: Electric press used for precision molded rubber parts



Modern Manufacturing Facilities

Our 140,000 square foot manufacturing facility houses 53 rubber molding presses ranging in size from 24" to 96". It also includes a rubber handlay department for tanks and pipe and a water jet screen cutter for rubber and urethane.

A Banbury mixer, used for rubber mixing, ensures strict quality control with lower costs and quick response time.

The company's lean manufacturing practices provide cost savings for our customers for all rubber/urethane products.

Professional Staff

Weir Minerals North America–Rubber Engineering's manufacturing professionals are industry leading experts in rubber molding, mill liner design and fabrication with the ability to provide excellent in-house engineering and design capacity.

Our leading rubber chemist and laboratory capabilities include work with thousands of elastomer compounds. Custom design and mixing is available to yield exclusive compounds for your applications. Each batch is quality tested and certification is retained.



Above: Our 140,000 square foot facility is registered to ISO 9001 and ISO 14000

Weir Minerals North America–Rubber Engineering

3459 S 700 West, Salt Lake City UT 84119
PO Box 26188, Salt Lake City UT 84126
USA

Tel: 801 530 7887
Fax: 801 261 5587
www.weirminerals.com

Excellent
Minerals
Solutions

