

WARMAN®
Centrifugal Slurry Pumps

Excellent
Minerals
Solutions



MD Dredge Pump



The Warman MD is a new product offering designed specifically to meet the demands/rigors of contractor and aggregate dredging.

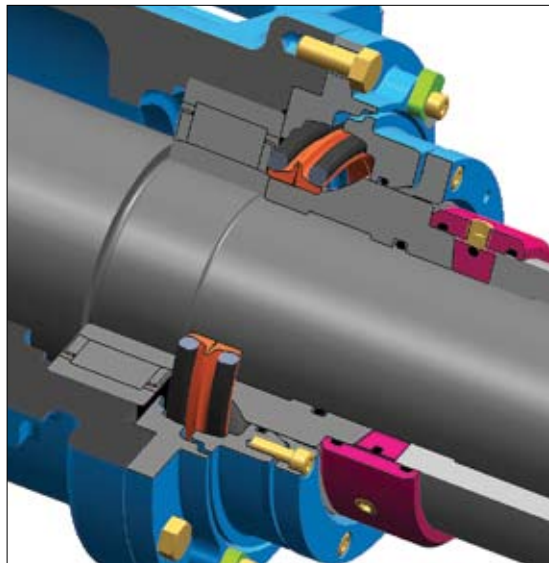
Employing the latest Computational Fluid Dynamics design techniques the Warman MD pump will provide superior resistance to wear, increased efficiencies, increased ease of maintenance and enhance the overall production of your operation.



Warman MD 12x10
dredge pump

Warman MD dredge pump features

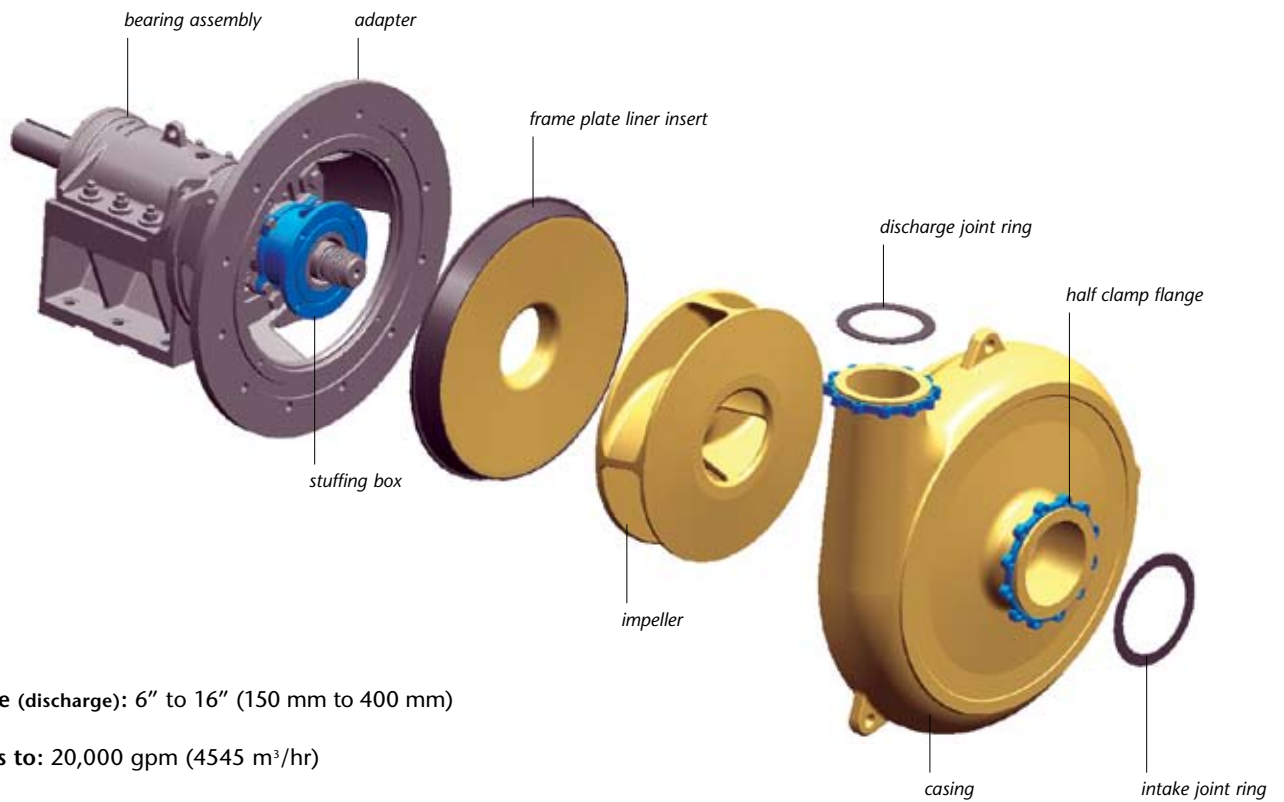
- Large diameter, slow turning, high efficiency impellers offer maximum wear life, lower operating costs and reduce the need for in line boosters
- Oversized internal passages provide enhanced sphere clearance resulting in increased production and reduced down time
- Left and right hand rotation available to simplify set up and operation with diesel engines
- Solid chrome iron or alternate resistant metallurgy to best suit application enabling long wear and ease of maintenance
- Heavy duty low profile mechanical ends conserve space and weight to assure easy integration of pump into ladders and confined hulls
- Compact cartridge-style oil lubricated bearing assemblies (grease available) offer reduced shaft/impeller overhang to increase bearing lives and minimize shaft deflection resulting in increased packing life
- Anti-vibration nuts used to secure bearing assemblies to pump base
- Unique, easily centered stuffing box reduces gland sealing maintenance and extends packing life
- Quick release clamping collar design facilitates impeller removal
- Top mounted adjusting screw for easy impeller adjustment
- Integrated gland seal guard minimizing risk from rotating elements
- Non-shimming design of underwater bearing housing seals reduces set up time and increases reliability



Underwater bearing housing
seal with speed capability to
1000 rpm

Underwater cartridge-style bearing assemblies

Both in-hull, grease lubricated and oil filled, underwater cartridge-style bearing assemblies available for all pump sizes.

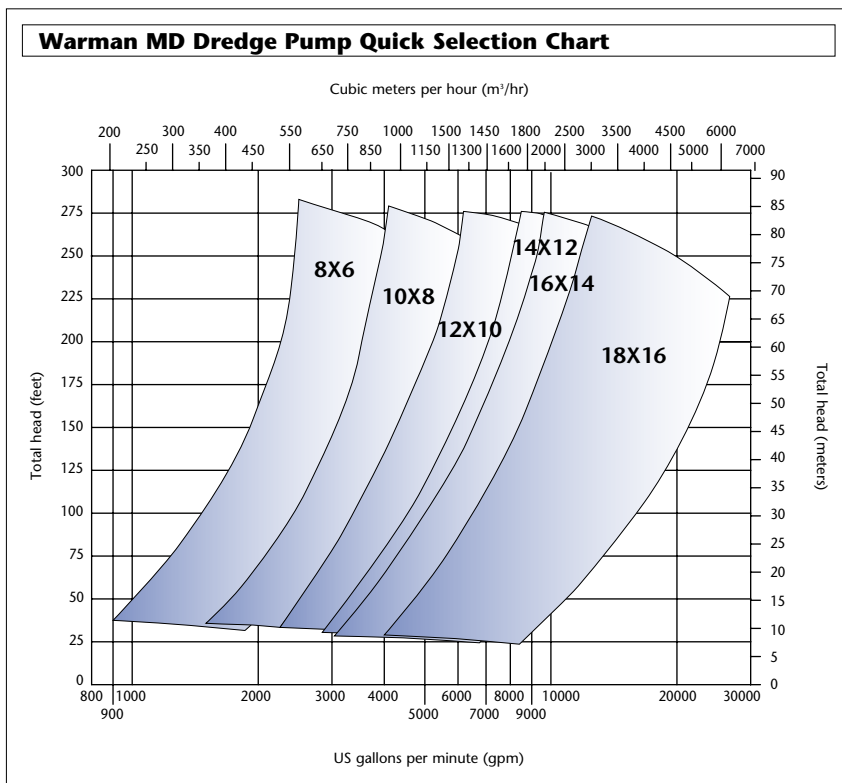


Size range (discharge): 6" to 16" (150 mm to 400 mm)

Capacities to: 20,000 gpm (4545 m³/hr)

Heads to: 275 ft (84 m)

Pressures to: 150 psi (10 bar)



Adjustable stuffing box

Adjustable stuffing box allows for centering of the stuffing box and lantern restrictor to the shaft sleeve.



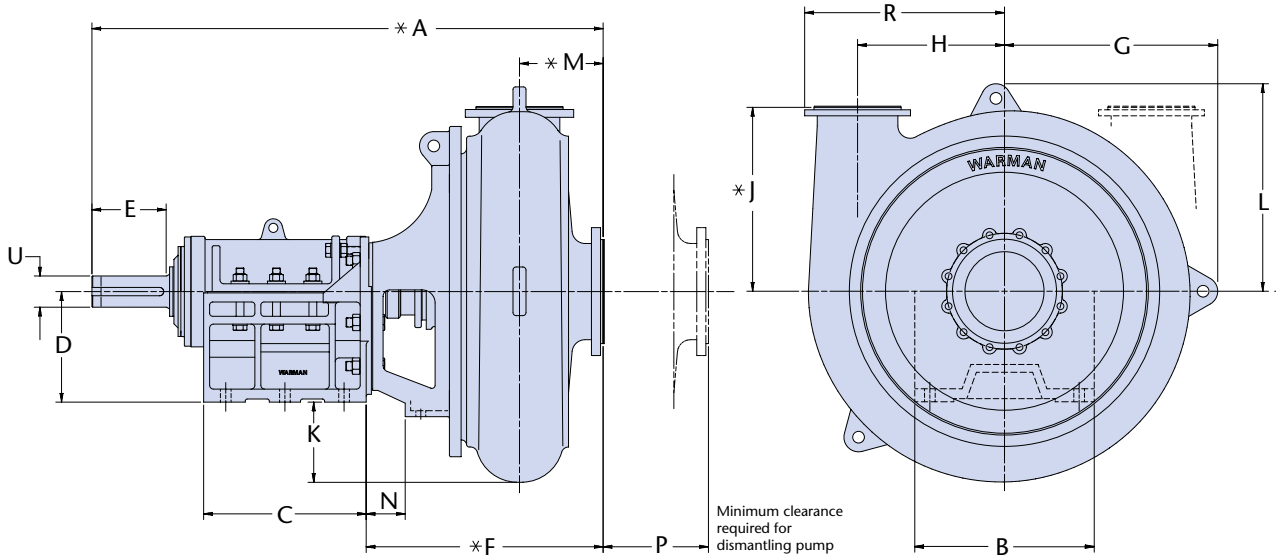
Self centering stuffing box/shaft sealing details with adjustment tool shown

Warman MD Pump Dimensions

pump size	*A mm	B mm	C mm	D mm	U mm	key size mm	E mm	*F mm	G mm	H mm	*J mm	K mm	L mm	*M mm	N mm	P mm	R mm	wt/kg approx
Standard duty bearing cartridge																		
8/6	1581	625	490	425	100	12x8	242	703	556	395	439	62	537	206	104	275	538	1660
10/8	1682	625	490	425	100	28x16	242	791	692	513	639	200	672	274	144	315	684	2310
12/10**	1808	625	490	425	100	18x11	242	911	820	565	712	308	798	326	150	405	768	3945
14/12**	1880	625	490	425	100	18X11	242	983	899	648	781	389	874	370	150	465	890	4915

Heavy duty bearing cartridge

12/10	1970	690	625	425	120	32x18	285	911	820	565	712	308	798	326	150	405	768	4140
14/12	2043	690	625	425	120	32x18	285	983	899	648	781	389	874	370	150	465	890	5115
16/14	2167	690	625	425	120	32x18	285	1095	996	708	894	483	974	403	148	550	973	7020
18/16	2265	690	625	425	120	32x18	285	1213	1048	735	1004	531	1026	489	148	600	1028	7900



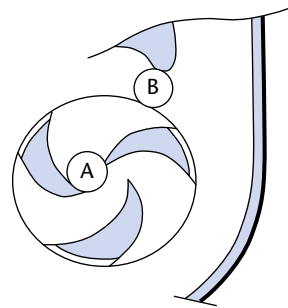
* Dimensions include compression of Warman rubber joint.

** Pump sizes available in both standard duty and heavy duty.

Either RH or LH pump rotations available.

Warman MD Characteristics Dimensions

pump size	impeller diameter mm	Pump max sphere 4V* imp mm
8/6	635	91
10/8	813	119
12/10	914	142
14/12	1016	160
16/14	1118	178
18/16	1164	196



* Limited at A

Note: Dimensions are for reference only. All dimensions are in mm.

Weir Minerals North America

2701 S Stoughton Rd, Madison WI 53716
PO Box 7610, Madison WI 53707
USA

Tel 608 221 2261
Fax 608 221 5810
www.weirminerals.com

Excellent
Minerals
Solutions

