

Description

CCC No.:	330	Bearing bracket F.S.	524	Shaft sleeve D.E.	602, 1	Renewable plate face	
113	Chamber	362	Oil box lid	524, 1	Oil ring	620	Wear indicator
160	Balance chamber cover	411	Renewable plate joint ring	525	Shaft joint sleeve	743	Aircock
162	Suction cover	452	Gland flange	541	Chamber bush	921	Shaft nut D.E.
163	Delivery cover	454	Gland ring	542	Renewable bush	921, 1	Shaft nut F.S.
171	Guideport	456	Suction stuffing box bush	545	Bearing bush D.E.	922	Suction impeller nut
173	Closing plate	458	Lantern ring	545, 1	Bearing bush F.S.	922, 1	Delivery impeller nut
211	Shaft	502	Neck ring	601	Balance disc		
230	Standard impeller	502, 1	Suction neck ring	601, 1	Balance disc ren. face		
231	Suction impeller	522	Delivery impeller sleeve	602	Renewable plate		

ENVIROTECH®
Centrifugal Slurry Pumps

GEHO®
PD Slurry Pumps

CAVEX®
Hydrocyclones

ISOGATE®
Slurry Valves

VULCO®
Wear Resistant Linings

Weir-EnviroTech (Pty) Ltd t/a
Weir Minerals Africa

PO Box 70, Isando, 1600.
31 Isando Road, Isando, 1601
Gauteng
South Africa

Tel: +27 (0)11 929-2600
Fax: +27 (0)11 929-2960
www.weirminerals.com
e-mail: weplump@weirminerals.com

Slurry
Equipment
Solutions

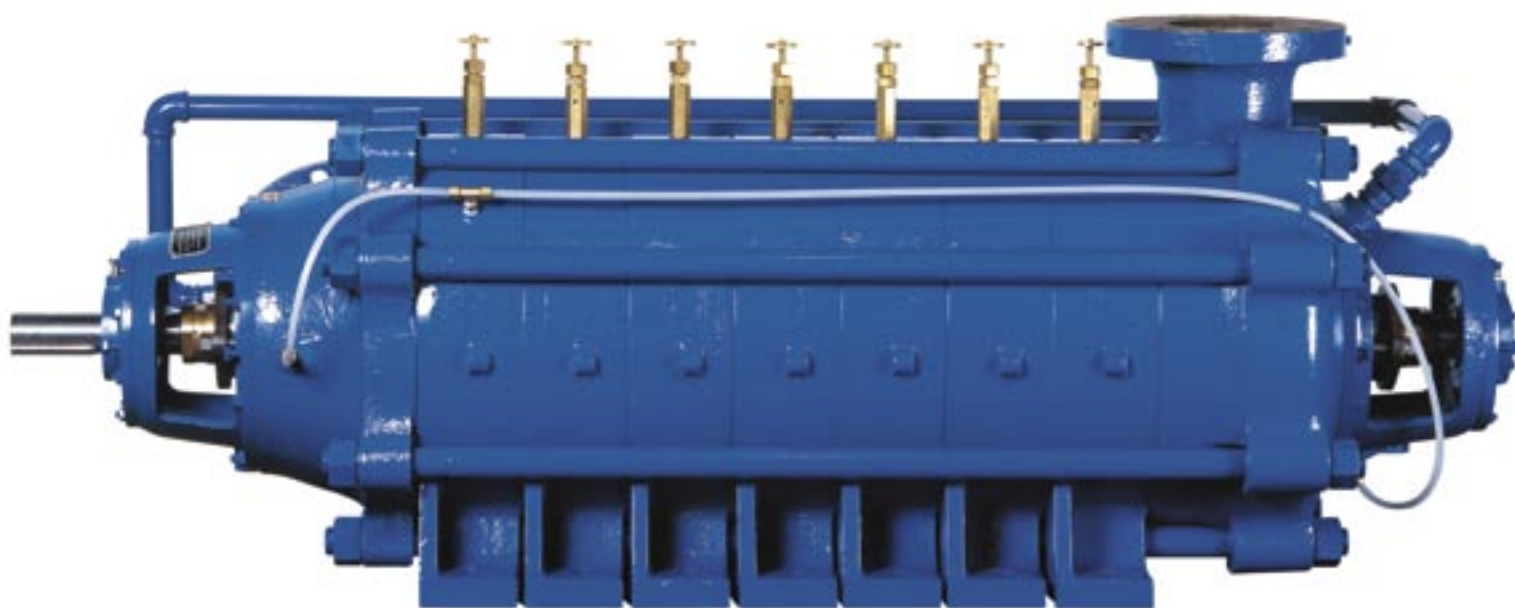
WEIR
MINERALS

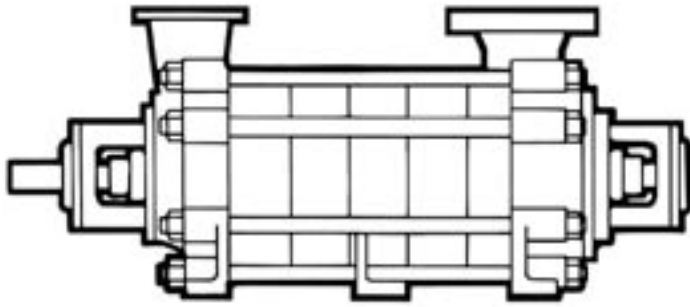
ENVIROTECH®

Multistage

Spiroglide – Standard Range

Slurry
Equipment
Solutions





Multistage Features

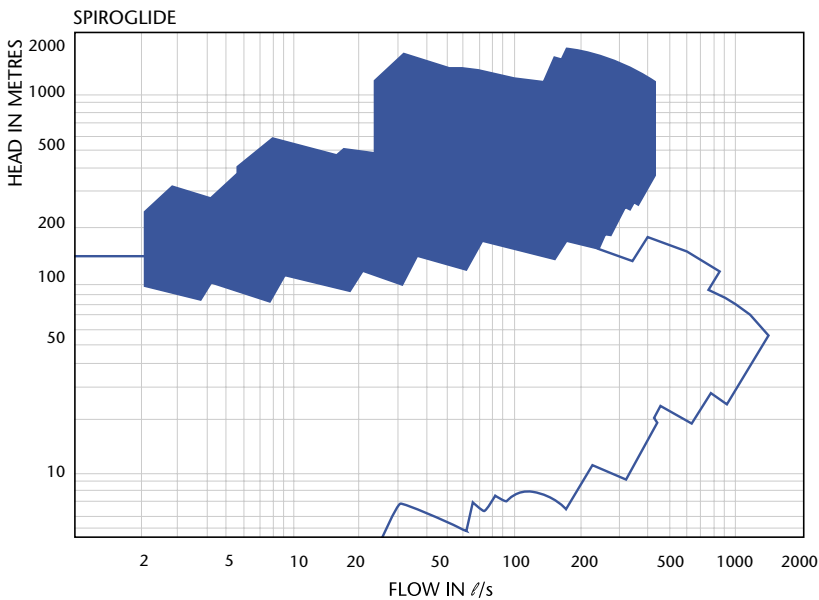
- Robust throughbolt construction.
- Efficient design.
- Reliability.
- Low maintenance costs.
- Balance disc for axial balance.

Duties

Heads Up to 1700 m
 Capacities Up to 400 l/s

Applications

- Mine dewatering.
- Fresh water supply.
- Spraying and jetting.
- Water treatment.
- High lift pumping.
- Booster duties.



Specifications

Pump Type	Branch Size		Max Pressure		Max Pressure		Maximum Speed of Rotation	Imp ø mm	Bearing		Gland packing mm
	Del. mm	Suct. mm	Construction Low Pressure	Test kPa	Construction high pressure	Test kPa			DE	NDE	
MNB	65	65	5400	8100			3200	155	Journal	Journal	10
MOB	80	80	5400	8100			3100	180	Journal	Journal	10
MOC	80	80	5400	8100			3000	180	Journal	Journal	10
MPB	100	100	5400	8100			2950	226	Journal	Journal	10
MPC	100	100	5400	8100			2800	220	Journal	Journal	10
MQB	125	125	5400	8100			2300	265	Journal	Journal	12
MQC	125	125	5400	8100			2200	265	Journal	Journal	12
MQG	125	125	5400	8100			2500	320	Journal	Journal	12
MRA (HP)	150	175			16500	24500	3000	320	Journal	Journal	12
MRB	150	175	5400	8100			1950	320	Journal	Journal	12
MRC	150	175	5400	8100			1900	320	Journal	Journal	12
MRC (HP)	200	200			15000	22000	3000	335	Journal	Journal	12
MRD	150	175	5400	8100			1800	320	Journal	Journal	12
MSD	250	300	5400	8100	8000	12000	1520	430	Journal	Journal	19
MSG	175	200	5400	8100	13500	25000	1900	484	Journal	Journal	19
MSH	250	300	5400	8100	3500	25000	1500	484	Journal	Journal	22
MSJ	250	300	5400	8100	13500	25000	1900	484	Journal	Journal	22
MTM	250	300			16000	24000	1500	620	Roller	Roller	20

Note: Dimensions shown are subject to change without notice.

Please refer to Weir-EnviroTech for certified information before construction commences

Dimensions

Low pressure design

Pumps	A	B	C	D	E	F	G	H	J	K	L	M	N	P	Q	R	S	T	U	X	Z	Width per Stage	No of Stages Min-Max
MNB	305	429	290	50	210	210	170	310	180	240	65	128	90	58	90	110	24	20	8	20	M12	64	4-12
MOB	305	462	280	60	230	230	200	370	220	320	75	154	116	60	76	98	28	24	8	20	M16	70	4-12
MOC	305	482	280	60	230	230	200	370	220	320	75	159	116	65	76	98	28	24	8	20	M16	75	4-12
MPB	352	457	343	72	280	280	250	440	260	360	90	175	127	73	87	112	36	31	10	25	M20	85	4-12
MPC	352	457	383	72	280	280	250	440	260	360	90	175	127	73	86	111	36	30	10	25	M20	85	4-12
MQB	382	627	337	76	350	350	270	480	280	400	100	205	152	83	107	137	38	33	10	30	M20	95	4-12
MQC	382	651	337	76	350	350	270	480	280	400	100	211	152	89	107	137	38	33	10	30	M20	101	4-11
MQG	400	600	337	76	350	350	270	480	280	400	100	200	152	77	107	135	38	33	10	30	M20	88	4-13
MRB	433	822	480	120	400	400	320	550	340	450	105	275	217	100	160	202	60	53	18	35	M24	115	4-12
MRC	443	662	480	120	400	400	320	550	340	450	105	276	217	110	160	211	60	53	18	35	M24	125	4-11
MRD	443	902	480	120	400	400	320	550	340	450	105	285	217	120	160	211	60	53	18	35	M24	135	4-10
MSD	674	815	600	130	580	580	440	820	500	660	160	380	290	160	185	255	85	78	20	35	M30	180	3-5
MSH	730	726	604	130	580	580	440	820	500	660	160	368	301	109	185	227	85	78	22	35	M24	130	3-5
MSJ	730	776	600	130	580	580	440	820	500	660	160	380	301	134	185	240	85	78	20	35	M24	155	3-5

High pressure design

Pumps	A	B	C	D	E	F	G	H	J	K	L	M	N	P		R	S	T	U	X	Z	Width per Stage	No of Stages Min-Max
MRA	623	555	621	125	495	495	390	680	400	560	140	137	57	140			70	63	20	25	M24	105	4-10
MRC	648	643	621	125	585	585	390	680	400	560	140	140	60	140			70	63	20	25	M24	125	4-8
MSD*	674	1355	600	130	580	580	440	700	500	600	100	224	191	85		40	85	78	20	30	M30	180	6-10
MSG*	639	544	610	130	580	580	425	700	500	600	100	139	110	90		53	85	78	20	30	M24	117	3-13
MSH*	730	1116	600	130	580	580	440	700	500	600	100	225	202	85		40	85	78	22	30	M24	130	6-12
MSJ*	730	1241	600	130	580	580	440	700	500	600	100	225	202	85		40	85	78	20	30	M24	155	6-13
MTM*	500	955	740	200	800	800	600	1140	700	1000	220	237	162	130		4	110	100	28	30	M24	160	3-12

* \perp Mounted - dimensions not shown

