

Service, solutions and support

Pumps and associated equipment

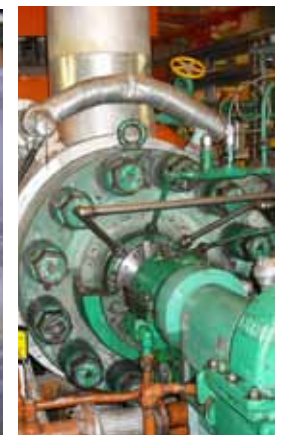
As a long term original equipment manufacturer, Weir Minerals Services has extensive experience and a high level of expertise in the installation, relocation, retrofit, upgrade, overhaul, servicing, fault analysis and component manufacture for pumps - single and multi-stage pumps, including API series pumps, and vertical and horizontal pumps for slurry, process, water, water treatment and sewage.

Further, with an intensive long term history in pump design and manufacture, such as the Warman pump since 1938, we have the in-house expertise in hydraulic design to implement changes to equipment to improve efficiencies and to reduce the wear rate that causes downtime - including update and redesign of pumps to the latest engineering practices.

Importantly, with our engineering expertise, leading edge service facilities around the nation and support of the Weir global network, customers can be assured of the best service solution every time.

Capabilities include:

- pump overhauls in our workshops or on-site - from total project management, to supervision, to responsibility for overhaul - with provision of supervisory, trades and assistance labour
- on-site machining for rectification and retrofit works working to close tolerances
- specially constructed, controlled environment bearing assembly 'clean rooms' fitted with correct tooling to ensure maximum life span of bearing assembly repairs
- machinery alignment with equipment regularly calibrated in accordance with manufacturers' recommendations, supported by in-house noise and vibration specialists with in-depth experience in analysis, solutions and rectification
- correct lifting tools and specialised tooling used to ensure pumps are repaired safely and without damage
- mobile containerised workshops for on-site activities fitted with equipment to conduct work
- re-engineered components can be manufactured within minimum timeframes. Combined with analysis of latest materials technology, the manufacturing of specific components to complete equipment is one of our key strengths
- spray water screen repair, rebuild, refurbishment and rust prevention
- special coatings to extend wearlife and improve efficiency
- as the original equipment manufacturer of Warman pumps, all repairs are made to meet our technical tolerance standards
- only genuine Warman spare parts supplied either from stock in Service Centres or manufacturing headquarters in Sydney
- recommendations for improvements to ensure maximum wearlife and peak operating efficiency.
- 'Rotable' Warman pumps to decrease inventory levels and increase service reliability
- 12 month as new warranty* on Warman® pump repairs



(Top) Warman pump rebuild in Service Centre. (Above left) Floway pump installation. (Above right) Power station boiler feed pump overhaul and upgrade.

Equipment expertise:

OEM repairer for Warman and:

- | | | |
|---------------|-------------|----------|
| • Begemann® | • GEHO® | • Lewis® |
| • Floway® | • Hidrostal | • Wemco |
| • Gabbionetta | • Kirloskar | |

Other manufacturers' brands includes:

- | | | |
|-----------------|------------------|---------------|
| • Bingham | • GIW | • RotoJet |
| • Byron Jackson | • Hitachi | • Sulzer |
| • Clyde | • Ingersoll Rand | • Torishima |
| • CPC | • ITT Flygt | • United |
| • Durco | • Johnson | • Worthington |
| • Flowserve/TKL | • KSB | |
| • Goulds | • Peerless | |

Meeting the needs of customers worldwide



Field Services	HQ	Somersby	15 Gindurra Road Somersby NSW 2250	Tel: +61 2 4349 2999 Fax: +61 2 4349 2900
Service Centres	NSW	Beresfield	9 Arunga Drive Beresfield NSW 2322	Tel: +61 2 4032 9400 Fax: +61 2 4032 9497
		Wollongong	Lot 2/17 John Cleary Place Coniston NSW 2500	Tel: +61 2 4227 4022 Fax: +61 2 4227 4088
	QLD	Rockhampton	80 McLaughlin Street N Rockhampton QLD 4701	Tel: +61 7 4924 7700 Fax: +61 7 4924 7799
	VIC	Sale	24 Hunt Place Wurruk VIC 3850	Tel: +61 3 5144 5933 Fax: +61 3 5144 1708
	WA	Henderson	20 Stuart Drive Henderson WA 6166	Tel: +61 8 9410 7500 Fax: +61 8 9410 7510
		Kalgoorlie	30 Atbara Street Kalgoorlie WA 6430	Tel: +61 8 9021 1454 Fax: +61 8 9021 1468
		Bunbury	1 Shanahan Road Bunbury WA 6230	Tel: +61 8 9726 2301 Fax: +61 8 9726 2303

Weir Minerals Australia Ltd

Services Headquarters:

15 Gindurra Road
Somersby NSW 2250
Australia
Tel: +61 2 4349 2999
Fax: +61 2 4349 2900

www.weirminerals.com

Excellent
Minerals
Solutions

